

Cleanic, the unique prophy paste is now available in a tube

Dr. S. Zimmer, Professor in Dentistry, Heinrich-Heine University, D-40225 Duesseldorf

Cleanic[®] prophy paste with Perlite technology from KerrHawe is an established, much valued product in the world of dentistry, combining low abrasion with a powerful cleaning action.

During the cleaning procedure the flat Perlite particles, when applied with a prophy cup or brush, remove plaque and pellicles like a scaler, and are then broken down into fine particles, perfect for polishing the surface of the teeth. This explains why Cleanic[®] has a powerful cleaning action, yet low abrasion, and results in a well-polished dentin surface which is key to preventing re-colonisation of micro-organisms. The Cleanic[®] abrasive system can thus be classified as a 'self-adjusting' system. In addition to alternative dispensing options, Cleanic[®] in a tube allows the appropriate amount to be dispensed with less waste, for example if you only required Cleanic[®] for tartar removal in the lower front area. The more traditional cups of prophy paste sometimes can dry out, especially if the lid is not closed correctly, making the paste difficult to extract and apply. The new container resolves all of the above issues. Cleanic[®] paste in a tube (**fig. 1**) is easily measured out into a finger cup (**fig. 2**).



Fig. 1 (left): Cleanic[®] in a tube

Fig. 2 (right): Simple dosing of the paste in the finger cup (Prophy-Clip)

When applied with a Pro-Cup® (**fig. 3**) or Pro-Brush™ (**fig. 4**), the consistency of the paste is ideal, and adheres well to the tooth surface, making it comfortable and easy to use.

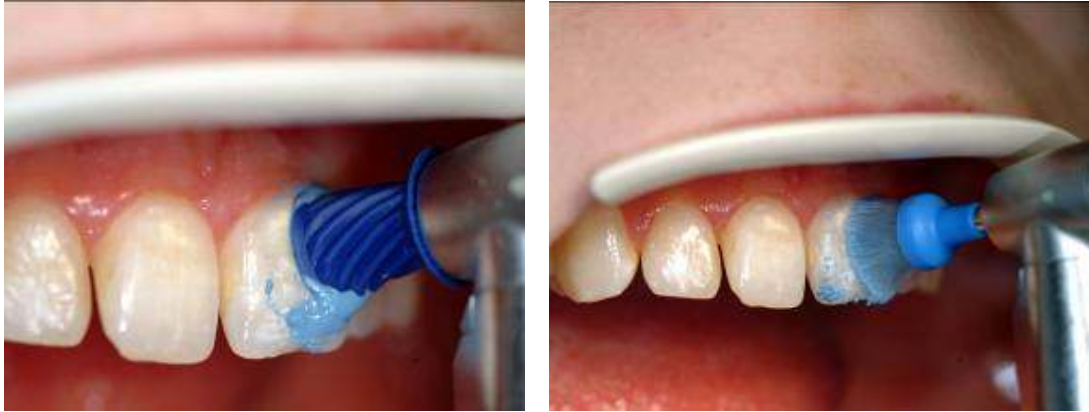


Fig. 3 (left): Applying Cleanic® prophylaxis paste with a Pro-Cup®

Fig. 4 (right): Applying Cleanic® prophylaxis paste with a Pro-Brush™

To improve visibility and accessibility to all the teeth during a professional teeth cleaning procedure, which is usually performed by a trained hygienist without assistance, it is useful to use the OptiView™ system (**fig. 5**). This simple tool holds the mouth comfortably wide open, enabling access to the difficult-to-reach posterior area (**fig. 6**).



Fig. 5 (left): Excellent visibility and accessibility thanks to OptiView™

Fig. 6 (right): Mouth held wide open with OptiView™, enabling access to posterior area

In conclusion, the new Cleanic® prophylaxis paste in a tube is a further improvement on an already excellent product, which has retained its classic properties such as fluoride content of 1000 ppm as sodium fluoride. The primary benefit of this improvement is that it promotes efficient and economical application.