

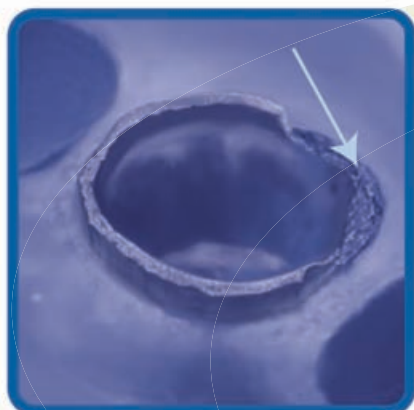
We've taken the complexity out of impression materials. Really.

Capturing a good impression can be difficult, even for experienced users. That's why we've designed Take 1[®] Advanced[™]—to help address some of the most common problems when taking an impression. This Troubleshooting Guide explains in more detail how to handle certain problems and offers helpful tips for avoiding them. While most impression materials are technique-sensitive, Take 1 Advanced isn't. Why? This product offers the widest selection of set times, delivery systems and consistencies available on the market today—all designed to work together, no matter what combination you choose.

Sometimes the simple answer is the most revolutionary.

Go online and try out the Kerr Impression Material Product Selection Guide, a great interactive tool that will give you a recommendation for your individual technique preferences based on your selections, along with tips for common situations and procedures. It's quick and easy to use. Go to kerrdental.com/take1advanced and try the Product Selection Guide today.

©2008 Kerr Corporation Lit. No. 34118



Problem: Tearing at margin

Evidence

- Visible tears at margin
- Lack of flash extending apically around entire preparation

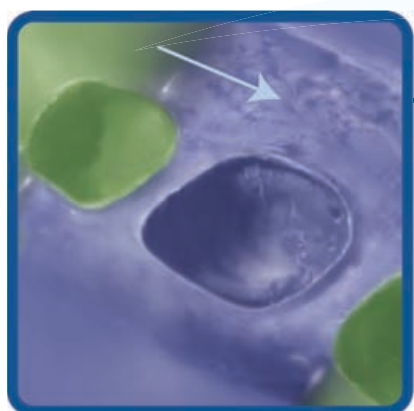
Cause

- Material has insufficient tear strength
- Presence of severe undercuts
- Insufficient sulcular expansion

Solution

- Use material with adequate tear strength
- Consider blocking out undercuts, especially in cases with gingival recession
- Ensure at least .5 mm sulcular expansion

Take 1 Advanced features outstanding tear strength to resist tearing when impression material sets in thin films or must stretch around undercuts upon removal.



Problem: Surface inhibition or "non-set"

Evidence

- Unset or mottled surface around preparation
- Lack of detail
- Shiny/wet appearance

Cause

- Contamination due to latex gloves; direct contact with material or residue left on teeth
- Contamination due to temporary materials or composite
- Expired material or exceeded material shelf life

Solution

- Use latex-free gloves when handling VPS material
- Rinse preparation area thoroughly after using other restorative materials
- Use automated mixing device to minimize exposure to contaminants
- Do not use expired material

Take 1 Advanced is available in Volume delivery for use in automated mixing machines to minimize exposure to contaminants.



Problem: Poor model detail

Evidence

- Small bubbles/indentations in cast
- Powdery cusps

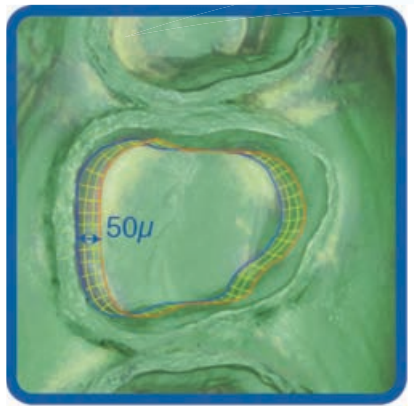
Cause

- Release of hydrogen gas from VPS impression after pouring cast
- Tooth contact with mesh lining of closed-bite impression tray

Solution:

- Follow manufacturer instructions regarding any delays for pouring models after taking impression
- Place cotton roll on contra-lateral side when using closed-bite trays to prevent direct tooth contact with tray; this prevents water from leaching through tray after cast has been poured

Take 1 Advanced contains a hydrogen scavenger to help eliminate delays in pouring cast after impressing.



Problem: Deformation/dimensional change

Evidence

- Crowns too tall/short
- Open contacts
- Crown will not seat

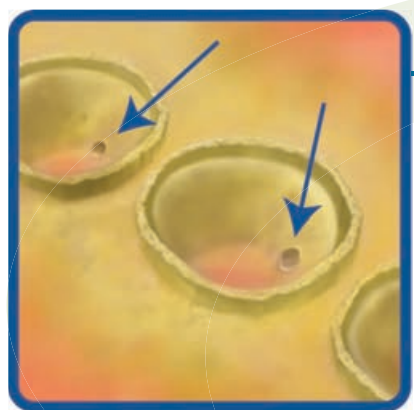
Cause

- Insufficient mix of material
- Impression removed too early
- Tray movement after seating
- Insufficient material elasticity
- Fluid absorption during disinfection process

Solution

- Verify material is adequately mixed before seating and completely set prior to removal
- Use passive force to maintain tray position when using open-bite technique
- Verify no tooth contact with tray sides or impingement in closed-bite technique
- Choose material with adequate elasticity
- Follow disinfection protocol carefully

Take 1 Advanced features outstanding dimensional stability, with excellent recovery from deformation and virtually no dimensional change after setting.



Problem: Voids in wash material

Evidence

- Visible voids in wash material around tooth preparation

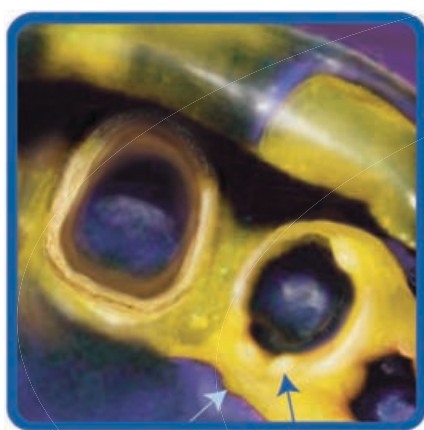
Cause

- Bubbles incorporated into material during mixing or loading syringe
- Bubbles incorporated while syringing material intraorally

Solution

- Use automix systems
- Syringe material intraorally in continuous stream around each preparation; do not lift syringe tip from material

Take 1 Advanced wash materials are available in Unidose[®] delivery to allow greater, more targeted control when syringing material intraorally. Unidose delivery also eliminates cross-contamination concerns.



Problem: Premature set

Evidence

- Abrupt change from heavy- to light-body material
- Muted detail around margin

Cause

- Set time of wash/tray material not synced
- Exceeded working time of material

Solution

- Begin mix of heavy and light viscosity concurrently
- Verify set times for heavy and light viscosities match
- Observe working time of materials

Take 1 Advanced is available in 3 set times to provide an adequate working time for any procedure, while also maximizing efficiency and patient comfort.



Problem: Insufficient or excessive compression

Evidence

- Insufficient: wash material flows away from preparation area
- Excessive: wash material displaced from preparation area; “burn through”

Cause

- Insufficient compression of wash material from adjacent tooth/tray or heavy-body material
- Excessive compression of wash material due to high viscosity of tray material

Solution

- Use tray viscosity material with greater compressive force, or use custom tray
- Use tray material with lower viscosity to avoid displacing wash material

Take 1 Advanced is available in 5 viscosities to provide adequate flow and body for any clinical case and any impression technique.



Problem: Incomplete margin

Evidence

- Voids or “jumps” on margin

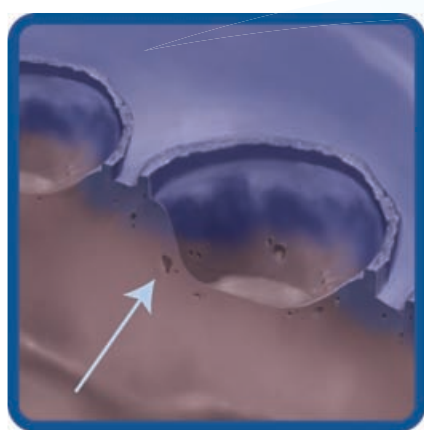
Cause

- Inadequate tissue management
- Contamination from intraoral fluids
- Insufficient compression of wash material

Solution

- Use Expasyl™ retraction paste to open sulcus and help maintain dry field
- Use hydrophilic wash material
- Select tray viscosity with adequate compression

Take 1 Advanced features hydrophilic syringe materials to help displace intraoral fluids and capture outstanding detail.



Problem: Voids in tray material

Evidence

- Visible voids in set impression
- Tearing of impression
- Poor fit at seating

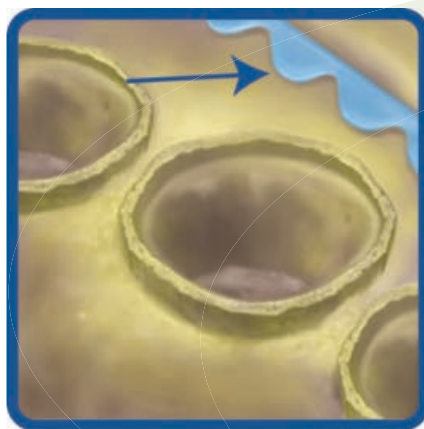
Cause

- Introducing bubbles when filling tray; layering material
- Introducing bubbles when mixing material by hand

Solution

- Keep tip buried in material during filling
- Fill in continuous path; do not layer material
- Use automated mixing machine for tray viscosity

Take 1 Advanced is available in Volume delivery for use with the Kerr Volume Mixer and other automated mixing machines to easily and quickly fill a tray with adequately mixed, bubble-free material.



Problem: Tooth contact with tray

Evidence

- Visible impingement

Cause

- Incorrect size tray
- Tray seating not aligned with dentition

Solution

- Verify tray has enough room for 2 mm of impression material between tooth and tray walls

Your practice is our inspiration.™



Take 1 Advanced Troubleshooting Guide

